



POLR1E Polyclonal Antibody

Catalog No	YP-Ab-01946
Isotype	IgG
Reactivity	Human;Rat;Mouse;
Applications	WB;IHC;IF;ELISA
Gene Name	POLR1E
Protein Name	DNA-directed RNA polymerase I subunit RPA49
Immunogen	Synthesized peptide derived from the Internal region of human POLR1E.
Specificity	POLR1E Polyclonal Antibody detects endogenous levels of POLR1E protein.
Formulation	Liquid in PBS containing 50% glycerol, 0.5% BSA and 0.02% sodium azide.
Source	Polyclonal, Rabbit,IgG
Purification	The antibody was affinity-purified from rabbit antiserum by affinity-chromatography using epitope-specific immunogen.
Dilution	WB: 1/500 - 1/2000. IHC: 1/100 - 1/300. ELISA: 1/10000.. IF 1:50-200
Concentration	1 mg/ml
Purity	≥90%
Storage Stability	-20°C/1 year
Synonyms	POLR1E; PAF53; PRAF1; DNA-directed RNA polymerase I subunit RPA49; RNA polymerase I subunit A49; DNA-directed RNA polymerase I subunit E; RNA polymerase I-associated factor 1; RNA polymerase I-associated factor 53
Observed Band	49kD
Cell Pathway	Nucleus, nucleolus .
Tissue Specificity	Cervix,Lung,Placenta,
Function	function:DNA-dependent RNA polymerase catalyzes the transcription of DNA into RNA using the four ribonucleoside triphosphates as substrates. Component of RNA polymerase I which synthesizes ribosomal RNA precursors. Appears to be involved in the formation of the initiation complex at the promoter by mediating the interaction between Pol I and UBTF/UBF.,similarity:Belongs to the eukaryotic RPA49/POLR1E RNA polymerase subunit family.,subunit:Component of the RNA polymerase I (Pol I) complex consisting of at least 13 subunits (By similarity). Interacts with PAF49/CD3EAP. Also binds UBTF/UBF.,
Background	function:DNA-dependent RNA polymerase catalyzes the transcription of DNA into RNA using the four ribonucleoside triphosphates as substrates. Component of RNA polymerase I which synthesizes ribosomal RNA precursors. Appears to be involved in the formation of the initiation complex at the promoter by mediating the interaction between Pol I and UBTF/UBF.,similarity:Belongs to the eukaryotic



RPA49/POLR1E RNA polymerase subunit family.,subunit:Component of the RNA polymerase I (Pol I) complex consisting of at least 13 subunits (By similarity). Interacts with PAF49/CD3EAP. Also binds UBTF/UBF.,

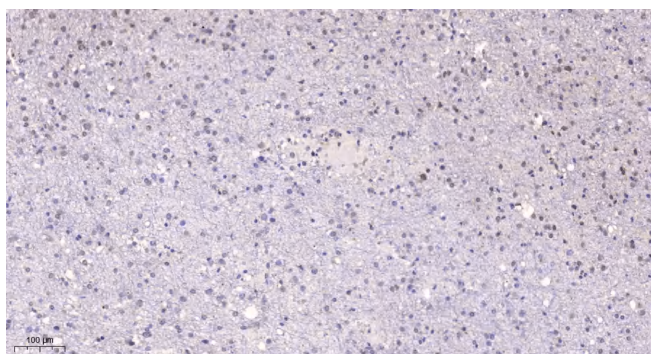
matters needing attention

Avoid repeated freezing and thawing!

Usage suggestions

This product can be used in immunological reaction related experiments. For more information, please consult technical personnel.

Products Images



Immunohistochemical analysis of paraffin-embedded human brain. 1, Tris-EDTA,pH9.0 was used for antigen retrieval. 2 Antibody was diluted at 1:200(4° overnight).3,Secondary antibody was diluted at 1:200(room temperature, 45min).